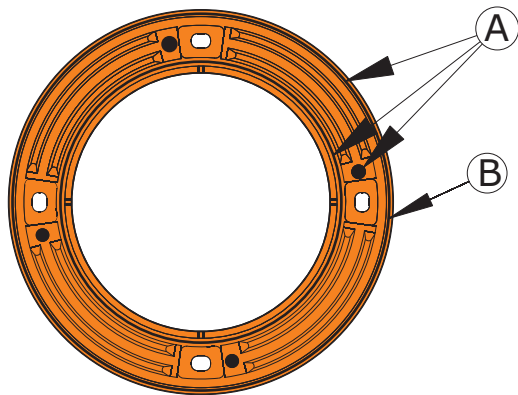
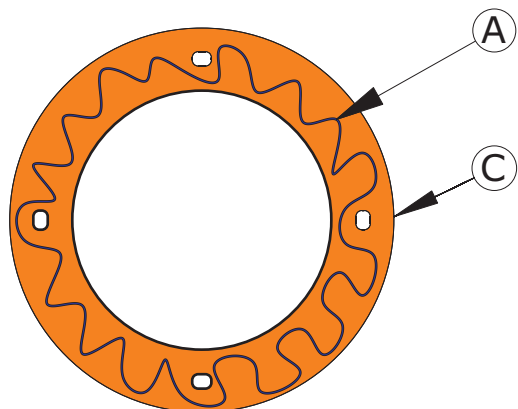


Installation Specification



SKETCH X

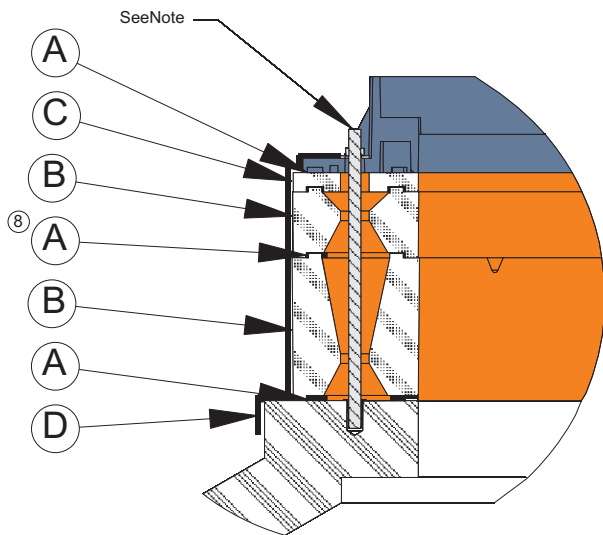


SKETCH Z

- 1 It is recommended to dig around cone structure so person can have a 24" min. clearance around the cone. This will aid in the pouring of UGT's Veil Safe. Dig at least 2 inches down to expose the side walls of cone.
- 2 Repair all major surface deterioration to the top and side of the cone. Use concrete or other products that are VOC free. Use wire brush and clean top surface and 2" exposed side surface. The surfaces do not have to be sanitary for Item A and Item D to work. Air or torch dry saturated surfaces.
- 3 If top surface is too damaged to stop INI (Inflow & Infiltration) install a 2-3 inch layer of mortar on top surface of cone. No need for smoothing or leveling.
- 4 If step 3 is performed, set Item B in mortar, centering the ID of the ring to the opening of cone. If step 3 is not performed skip go to step 5.
- 5 Install Item A in the concentric grooves of Item B along with spots in flat areas. See Sketch X.
- 6 Set Item B in location centering the ID of the ring to the opening of the cone. Designate the first course. Apply hand pressure around the circumference of the ring to assure adhesion.
- 7 Stack additional grade rings if necessary. If the hole requires vacuum testing install Item A as described in step 5.
- 8 Set Item C in place engaging the concentric rings. If the hole requires vacuum testing install Item A as described in Step 5.
- 9 Install Item A on top flat surface of Item C as shown in Sketch Z. Tailor the dispensing pattern of Item A to match the Frame flange.
- 10 Set Frame in place centering to the opening of Cone.
- 11 Stir Part A of Item D. and pour Part A into Part B. Mix by hand until consistency is like a thick liquid. This will take about 2-3 minutes and the mixture can will start to get warm.
- 12 Pour Item D evenly around the circumference of the Frame's flange and let mixture drip down the sides of the chimney and over the cone.
- 13 Use disposable 6 inch roller to distribute Item 4 until no orange is visible and seam between first course and Cone are sealed.
- 14 Item 4 will become tack free in approximately 15 minutes, backfill can take place in approximately 45 minutes.

NOTES:

Holes for the bolt down configurations are available in Item A & C in the 40" rings but not in the 36" or 34" part numbers. These holes can be drilled on site using a 3/4" drillbit.



BOLT DOWN

FRAME

CONE

BILL OF MATERIALS

ITEM	DESCRIPTION
A	UGT SECURE N SEAL
B	UGT GRADE RING
C	UGT FINISH RING
D	UGT VEILSAFE



UGT MANHOLE INSTALLATION SPECIFICATION

SIZE DWG. NO.

A

SCALE: 1:50 DATE